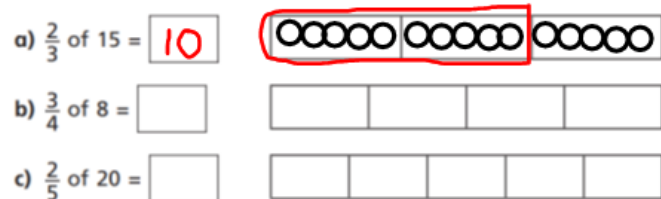


01.03.21 – LI: To find fractions of a set of objects Y3 Lesson 2

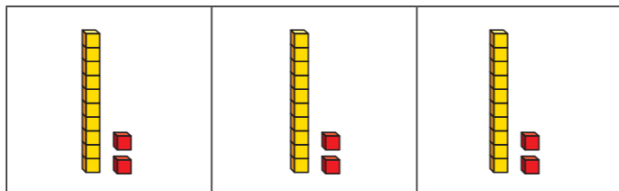
1. Draw counters in the bar models to help you answer the number sentence.  
The first one has been done for you.



2. Match the questions and answers.

$\frac{2}{3}$ of 9 = ?	9
$\frac{3}{5}$ of 15 = ?	6
$\frac{5}{6}$ of 12 = ?	15
$\frac{3}{4}$ of 20 = ?	10

3. Brett uses a bar model and base 10 to find  $\frac{2}{3}$  of 36




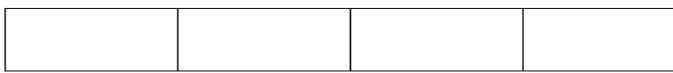

Use Brett's method to complete the number sentences.

- a.  $\frac{3}{4}$  of 48      b.  $\frac{2}{3}$  of 66      c.  $\frac{2}{5}$  of 55


4. Kim uses a bar model and place value counters to find  $\frac{2}{3}$  of 36



Use Kim's example to help you. Remember to share your tens and ones equally.


- a.  $\frac{3}{5}$  of 50 
- b.  $\frac{3}{4}$  of 84 
- c.  $\frac{2}{3}$  of 69 

5.



Tommy

To find  $\frac{3}{4}$  of 12,  
you divide by 4 and then  
multiply the answer by 3



Dexter

To find  $\frac{3}{4}$  of 12,  
you divide by 3 and then  
multiply the answer by 4

Who is correct? \_\_\_\_\_

How do you know? Show your working.