

Knowledge Organiser - Year 1—Geography: Africa (Madagascar)

Key Question — What makes Madagascar unique?



Key Concepts

climate	Weather in a certain place over a long period of time.
habitat	The natural home of an animal or plant.
landscape	Everything that can be seen when you look across an area of land.
vegetation	Plant life.

Wildlife

The island is isolated so many animals have survived and evolved into unique forms.

Home to almost 15,000 plant species, and over 80% of these are found nowhere else in the world.

About 40 species of lemurs are indigenous to Madagascar.

Home to two thirds of the world's chameleon species.

Home to 240 different reptile species.

Lemurs

Considered amongst the most endangered animals on the planet.

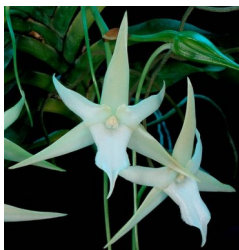
Lemurs, who live in the wild, only live on Madagascar.

Many species of lemurs are nocturnal so they sleep during the day and are awake at night.

Lemurs spend most of their time in trees.

Their diet consists mainly of fruit, leaves and plants.

Darwin's

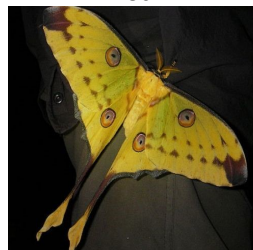


Or-

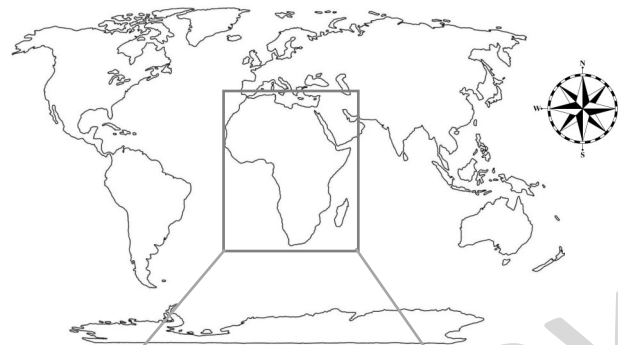
Madagascar Long-Eared Owl



Comet Moth



Where in the world is it?



Key Places

Africa	One of the seven continents of the world
Antananarivo	Capital city of Madagascar
Indian Ocean	Third largest ocean on the planet Earth
Madagascar	An island off the East of Africa

Key Vocabulary

compass	A piece of equipment used to find your way around. It often has a needle which points in the direction of North.
continent	Continuous expanses of land. A huge expanse of land is normally made up of a number of countries.
country	Nation with its own government, occupying a particular place.
direction	The position towards which someone or something moves or faces.
evolved	Develop gradually, from a simple to a more complex form.
indigenous	Produced, growing, living, or occurring naturally in a particular place.
island	An area of land surrounded by water.
species	A kind, or type, of living creature.
unique	Being the only one of its kind, unlike anything else.

Biome: Grassland

Large areas covered in grass.

Rainfall can be between 60—150cm per year.

There is a dry season and a rainy season.

It is used for agricultural use.

There is not enough rainfall to support the growth of trees.

Fossa



Lemurs



Tomato Frog



Madagascar Hissing Cockroach

