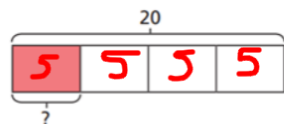


# 02.03.21 – LI: To find fractions of a quantity

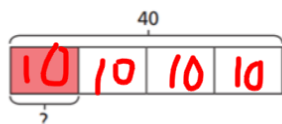
1.

Complete the number sentences.

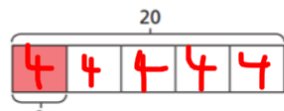
a)  $\frac{1}{4}$  of 20 = 5



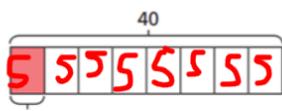
d)  $\frac{1}{4}$  of 40 = 10



b)  $\frac{1}{5}$  of 20 = 4



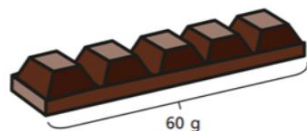
e)  $\frac{1}{8}$  of 40 = 5



2.

Filip has a chocolate bar with 5 equal pieces.

The chocolate bar weighs 60 g.



a) What is the mass of one piece?

The mass of one piece is 12 g.

b) Filip eats  $\frac{3}{5}$  of the bar of chocolate.  
How many grams does Filip eat?

$$12 \times 3 = 36g$$

3.

Complete these number sentences.

a.  $\frac{1}{7}$  of 35 = 5

b.  $\frac{3}{7}$  of 35 = 15 (3x5)

c.  $\frac{2}{6}$  of 42 = 14(7x2)

d.  $\frac{5}{6}$  of 42 = 35 (7x5)

4.

a) Write each calculation in the correct circle.

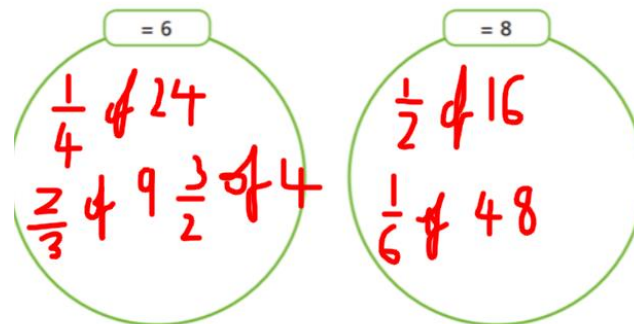
$\frac{1}{2}$  of 16

$\frac{1}{4}$  of 24

$\frac{2}{3}$  of 9

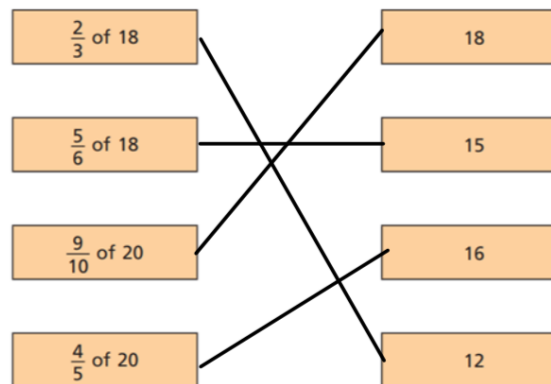
$\frac{3}{2}$  of 4

$\frac{1}{6}$  of 48



5.

Match the calculations to the answers.



6.

Use this bar model to find and represent:



$\frac{1}{8}$  of 48 =  $48 \div 8 =$  6

$\frac{2}{8}$  of 48 = 12

$\frac{3}{8}$  of 48 = 18

$\frac{4}{8}$  of 48 = 24

$\frac{5}{8}$  of 48 = 30

$\frac{6}{8}$  of 48 = 36

$\frac{7}{8}$  of 48 = 42

$\frac{8}{8}$  of 48 = 48