

1.

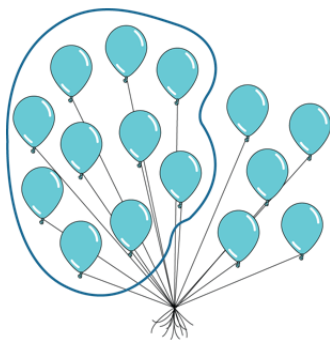
Use counters to show 1 ten and 3 ones.

1 ten and 3 ones is equal to

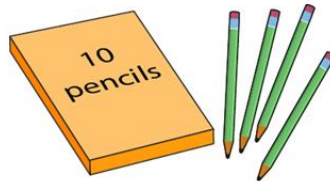
--

2.

What numbers do the pictures represent?



10s	1s



10s	1s

3.

Fill in the ten frames with counters to show 14 and complete the sentence.

14 has _____ ten and _____ ones.

4.

Complete the sentences.

a) 1 ten and 6 ones =

b) = 1 ten and 3 ones

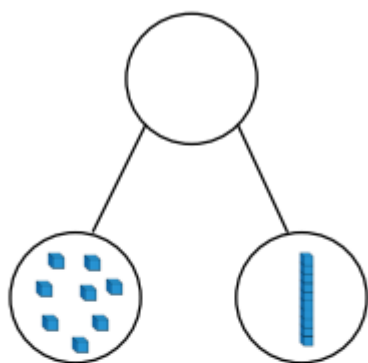
c) 15 = ten and ones

d) 2 tens =

e) 1 ten and 10 ones =

5.

Alex makes a part-whole model.



She says:



There are 8 tens and
1 one.

Explain her mistake.

What is her number?