

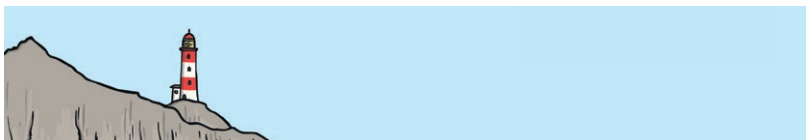
What Is a Lighthouse?

A lighthouse is a building or structure which projects light to warn ships and boats. They highlight coastlines and reefs and can also assist with navigation. They are usually found on cliffs, at the entrance to a harbour and in the water on a raised stand.

History of Lighthouses

Lighthouses have changed somewhat since they were first invented. The first warning system used fires on top of hills, which warned sailors of land. By raising the fires on platforms, they were more easily seen and this led to the invention of the lighthouse.

Initially, lighthouses were there only to warn of harbours rather than rocks or reefs underwater. The first known lighthouse was next to the island of Pharos, Egypt. It was eventually destroyed by an earthquake.



In Britain, the first lighthouse was built at the time when stronger and more weatherproof lighthouses were being invented. The Eddystone Rocks were a shipwreck hazard for those sailing through the English Channel and the first lighthouse there was an octagonal wooden structure. It was the first tower to be exposed to open sea. It has been rebuilt three times.

Photo courtesy of Fæ (@flickr.com) - granted under creative commons licence - attribution



Interesting Fact

Some countries still call a lighthouse a 'Pharos'.

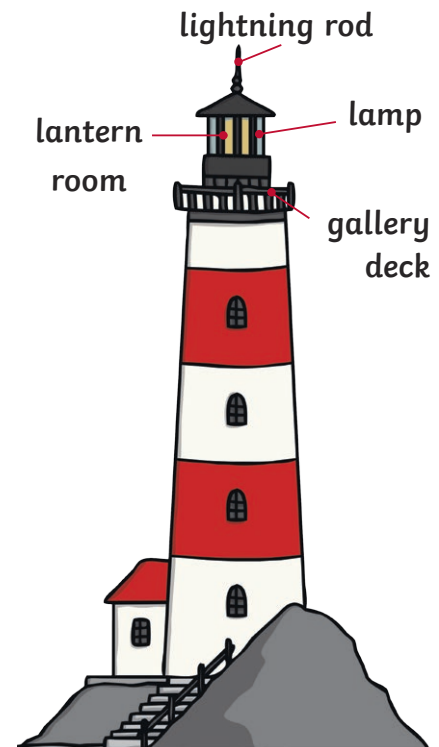
A Lighthouse

There are over 100 lighthouses around the UK. Only some of these are still in use due to the expensive upkeep they require. Other navigational systems have also been invented meaning there is less purpose for a lighthouse. However, many seafarers still see a lighthouse as a symbol of hope.

Lantern Room – A room at the top of the lighthouse housing a lamp and a lens. It has glass windows so the light can project out.

Lightning Rod – Lighthouses are often subjected to storms. A copper rod on the top of the structure aims to take the lightning straight to the ground, to avoid damage.

Gallery Deck – A platform that circles the lighthouse just below the lantern room. It allows the lighthouse keeper to clean the windows as well as enabling them to look out to sea.



Lamp – Where the light comes from. In the past, this may have been oil burning or a candle. Technological advances have provided electricity supplies to lighthouses.

Lighthouse Keeper – A lighthouse keeper was somebody who tended to the lighthouse, ensuring the light kept burning and the windows were cleaned. The last manned lighthouse in the UK was in 1998.

All About Lighthouses

1. Explain the purpose of a lighthouse and how it does this.

2. How have lighthouses changed over the years?

3. "The last manned lighthouse in the UK was in 1998." Why do you think lighthouses are no longer manned?

4. Where was the first known lighthouse?

5. How many times has the Eddystone Rocks lighthouse been rebuilt?

6. Why are some UK lighthouses no longer in use?

7. List the four most important features of a lighthouse.

All About Lighthouses: **Answers**

1. Explain the purpose of a lighthouse and how it does this.

A lighthouse is designed to warn ships about dangers which might be difficult for them to see, for example: rocks, coral reefs, harbour walls. They warn ships by shining a bright light and are often on top of cliffs or raised platforms to make them easier to see.

2. How have lighthouses changed over the years?

Lighthouses were first just fires on the top of hills and only warned about harbours. Now they warn about more things and are built high on platforms. They are made from more waterproof materials and use electricity to make the light.

3. "The last manned lighthouse in the UK was in 1998." Why do you think lighthouses are no longer manned?

Various answers possible but most likely because they are now automatic or can be operated remotely using computers.

4. Where was the first known lighthouse?

The island of Pharos, in Egypt.

5. How many times has the Eddystone Rocks lighthouse been rebuilt?

Three times.

6. Why are some UK lighthouses no longer in use?

They are expensive to run.

7. List the four most important features of a lighthouse.

Lantern room, lighting rod, gallery deck, lamp.